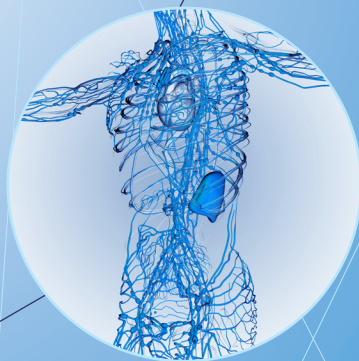




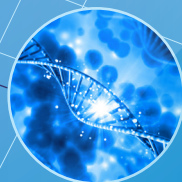
# CALYM'S 3<sup>rd</sup> SCIENTIFIC & PARTNERING DAY

Paris, October 17, 2016

Advancing **Lymphoma**  
Diagnosis & Treatment  
**TOGETHER**



Espace Van Gogh  
62, quai de la Rapée  
Paris, France



# PROGRAM

9:00 **Networking Coffee**

10:00 **Welcome and Opening Remarks**

*Philippe Gaulard, Henri Mondor University Hospital, Créteil - Scientific Director, CALYM*

10:05 **Industry-Academia Lifescience Research Partnering: Why and How?**

*Marc de Garidel - Chairman, Ipsen - Chair: The Innovative Medicines Initiative*

10:25 **Lymphoma Therapeutics and Diagnosis Research: Needs and Trends**

*Gilles Salles, Lyon-Sud University Hospital, Lyon - President, CALYM*

10:45 **CALYM, Innovation and its Transfer in the Lymphoma Field**

*Pascal Deschaseaux - General Manager, CALYM*

10:55 **Questions and Answers**

11:00 **CALYM Unique Lymphoma Partnering R&D Offering - SESSION 1  
Therapeutic Targets and *In Vitro* Research**

**Targeting of Novel Immunomodulatory Pathways in Lymphomas**  
*Daniel Olive, Marseilles Cancer Research Center*

**Follicular Lymphoma Microenvironment as a Therapeutic Target**  
*Karin Tarte, Microenvironment and Cancer Laboratory, Rennes*

**Identifying and Validating New Lymphoma Therapeutic Targets**  
*Olivier Hermine, Imagine Institute for Genetic Diseases, Paris*

**Therapeutic Implications of Identification of Mutations in Epigenetic Regulators in PTCL**  
*François Lemonnier, Henri Mondor University Hospital, Créteil*

**A Unique Collection of Human Primary Lymphoid Cells for *In vitro* Preclinical Tests**  
*Thierry Fest, Laboratory Microenvironment and Cancer, Rennes University Hospital*

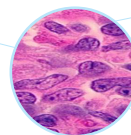
**Rationale for Testing BH3 Mimetics in *In vitro* Lymphoma Models**  
*Martine Amiot, Nantes-Angers Cancer Research Center*

12:30 **Networking Lunch Buffet**

13:30 **CALYM Unique Lymphoma Partnering R&D Offering - SESSION 2  
*In Vivo* and Clinical Research**

**Role of a Super-Enhancer in Mouse Lymphoma Models**  
*Michel Cogné, Limoges University, Biology and Healthcare Research Center*

**The BCL2 Tracer Model of Follicular Lymphoma Genesis**  
*Bertrand Nadel, Centre d'Immunologie de Marseille-Luminy, Marseilles*



**Preclinical Modelling of Drug Resistance in Lymphoma**  
*Charles Dumontet, Cancer Center of Lyon*

**EARLY, CALYM's Platform for Early Phase Clinical Trials**  
*Florence Broussais, The Lymphoma Academic Research Organisation (LYSARC)*

**Academia-Sponsored Lymphoma Drug Registration Clinical Trials: an Industry Perspective**  
*Ken Takeshita, Vice-President, Celgene*

**Real Life Data in Lymphoma : the SIMONAL Study Example on 5,937 NHL Patients**  
*Sabine Anthony, Nice University Hospital*

15:00 **Coffee Break**

15:30 **CALYM Unique Lymphoma Partnering R&D Offering - SESSION 3  
Biomarkers**

**Circulating DNA Mass and Metabolic Tumor Volume: the Same Parameters?**  
*Marie-Hélène Delfau-Larue, Henri Mondor University Hospital, Créteil*

**Biological Molecular Tools to Tailor Therapeutic Strategies in Lymphoma**  
*Fabrice Jardin, Henri Becquerel Comprehensive Cancer Center, Rouen*

**Construction and Validation of a Transcriptional Score for the Prediction of Progression Free Survival in Follicular Lymphoma**  
*Bruno Tesson, CALYM*

**Identifying New Lymphoma Imaging Biomarkers**  
*Michel Meignan, Henri Mondor University Hospital, Créteil*

16:30 **Meeting Conclusion - Partnering with CALYM**

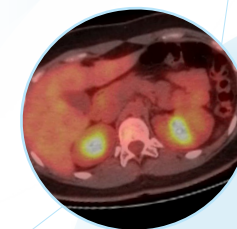
**CALYM's Clinical Pipeline**  
*Hervé Tilly, Henri Becquerel Comprehensive Cancer Center, Rouen*

**CALYM's Operations: our Strengths**  
*Pascal Deschaseaux, General Manager, CALYM*

**Closing Remarks**  
*Gilles Salles, President, CALYM*

17:00 **Networking Cocktail**

18:00 **Meeting Concludes**



# REGISTRATION is FREE but MANDATORY at [registration@calym.org](mailto:registration@calym.org)

*Registration is on a first come, first served basis  
space being limited to 200 participants*

---

## ACCESS

METRO M1 - M14 Gare de Lyon / M5 Quai de la Rapée / M5 - M10 Gare d'Austerlitz  
RER A - D Gare de Lyon / RER C Gare d'Austerlitz

---

## CALYM

The Consortium for the Acceleration of Innovation and its Transfer in the Lymphoma Field

*The CALYM Carnot institute is an academic research consortium that offers a unique R&D approach in lymphoma treatments and diagnostics spanning from new target identification to large international Phase III clinical trials and beyond. CALYM brings together 15 entities with complementary expertise in preclinical, translational and clinical lymphoma research: the Lymphoma Study Association (LYSA), a cooperative group, international leader of lymphoma research with 750 members within 130 centers in 4 countries, the Lymphoma Academic Research*

*Organisation (LYSARC), a fully integrated academic clinical organisation - the largest in Europe in this field - and 13 public preclinical research teams of excellence in lymphoma based at universities and hospitals across France. This set without international equivalent, aims at accelerating innovation and its transfer in the lymphoma field, particularly in the translational phase. This is done with the financial support of the French government, through research partnerships with industry and other technological and research organisations.*

---

## Composition of the Consortium

- Lymphoma Study Association (LYSA)
- Lymphoma Academic Research Organisation (LYSARC)
- UMR1052 Inserm 5286 CNRS - Anticancer antibodies
- UMR1052 Inserm 5286 CNRS - Clinical and experimental models of lymphomagenesis
- UMR7276 CNRS - Control of the B cell immune response / Molecular mechanism of lymphomagenesis
- UMR5235 CNRS - Cytokine receptors and signalling
- UMR1170 Inserm - Early steps of haematopoietic transformation
- U1104 Inserm UMR7280 CNRS- Genomic instability and human hemopathies
- U1068 Inserm UMR7258 CNRS - Immunity and cancer
- U955 Inserm - Immunology and oncogenesis of lymphoid tumors
- U1163 Inserm 8254 CNRS ERL - Laboratory of molecular mechanisms of hematologic disorders and therapeutic implications
- UMR U918 Inserm - Lymphoid proliferations
- UMR U917 Inserm - Microenvironment and cancer
- UMR892 Inserm 6299 CNRS - Molecular bases for targeted therapies of multiple myeloma and mantle cell lymphoma
- UMR1037 Inserm UPS ERL 5294 CNRS - RNA biology in haematological cancers